

20 de maio de 2021 | Nº 015

CONSULTA À INDÚSTRIA

O Cluster Tecnológico Naval-RJ **divulga** consulta à indústria da **SPE Águas Azuis Tecnologia Naval**, responsável pela construção de quatro fragatas Classe Tamandaré para a Marinha do Brasil, em busca de empresas que forneçam **Tampa de ispeção (MANHOLE COVER)**.

Os desenhos e especificações aproximadas do produto buscado podem ser encontrados nas páginas seguintes.

Desejamos sucesso em seus negócios! Caso a sua empresa forneça esse tipo de produto ou precise de mais informações, entre em contato através do e-mail oportunidades@clusternaival.org.br.

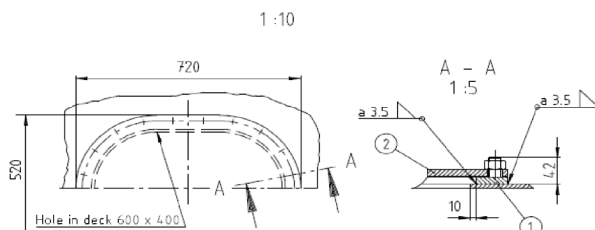
IMPORTANTE - Este informativo não faz parte de uma licitação, consistindo apenas em uma consulta sobre a existência de fornecedores na indústria brasileira.

MEKO A-100 MB
00051631
16750 MANHOLE FRAMES AND COVERS

10.05.2021

Type A1, DIN 83402 29 pieces per ship	<p>Pos. 1: Welded parts Mat.-No. 0000382874 / MANHOLE FRAME 1 piece frame DIN83402 12 mm steel/ D36 20 piece DUO-threaded bolt ST/1.4571 with protective caps Surface preparation SA 2.5, 20 µm, Sigmaweld 199, Colour: red brown</p>
	<p>Pos.2: Not welded parts Mat.-No. 0000382876 / MANHOLE COVER 1 piece seal DIN83403 A400x600 2 piece hexagon head screw M 20 x 20 DIN ISO 4017 A4 1 piece cover DIN83402 A1 600x400 7 mm steel/ D36 20 piece hexagon nut M 20 DIN ISO 4034 A4 2 piece screw plug M 20 Surface preparation SA 2.5, 50 µm 15570 Hempadur, Colour: grey 12430</p>

Type A 1
Manhole cover
600 x 400 DIN 83402 29 kg



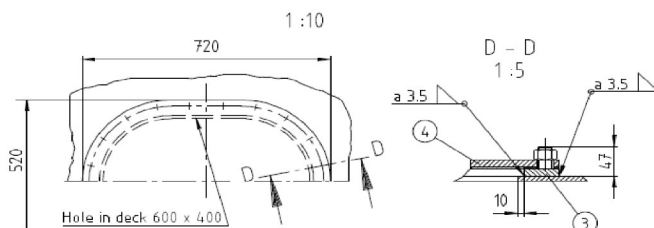
1/6

MEKO A-100 MB
00051631
16750 MANHOLE FRAMES AND COVERS

10.05.2021

Type A3, DIN 83402 2 pieces per ship	<p>Pos.3: Welded parts Mat.-No. 0000382879 / MANHOLE FRAME 1 piece frame DIN83402 12 mm steel/ D36 20 piece DUO-threaded bolt ST/1.4571 with protective caps Surface preparation SA 2.5, 20 µm, Sigmaweld 199, Colour: red brown</p>
	<p>Pos.4: Not welded parts Mat.-No. 0000382880 / MANHOLE COVER 1 piece seal DIN83403 A400x600 2 piece hexagon head screw M 20 x 20 DIN ISO 4017 A4 1 piece cover DIN83403 A3 600x400 12 mm steel/ D36 20 piece hexagon nut M 20 DIN ISO 4034 A4 2 piece screw plug M 20 Surface preparation SA 2.5, 50 µm 15570 Hempadur, Colour: grey 12430</p>

Type A 3
Manhole cover
600 x 400 DIN 83402 41 kg



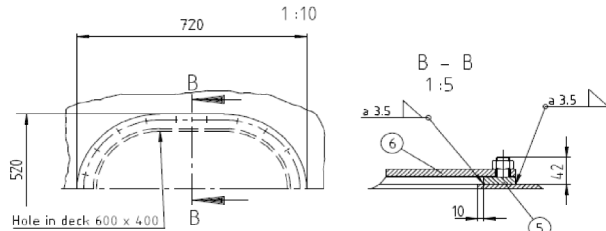
2/6

MEKO A-100 MB
00051631
16750 MANHOLE FRAMES AND COVERS

10.05.2021

Type AE1, DIN 83402 15 pieces per ship	<p><u>Pos.5: Welded parts Mat.-No. 0000382877 / MANHOLE FRAME</u> 1 piece frame DIN83402 12 mm steel/ D36 20 piece DUO-threaded bolt ST/1.4571 with protective caps Surface preparation SA 2.5, 20 µm, Sigmaweld 199, Colour: red brown</p>
	<p><u>Pos.6: Not welded parts Mat.-No. 0000382878 / MANHOLE COVER</u> 1 piece seal DIN83403 A400x600 2 piece hexagon head screw M 20 x 20 DIN ISO 4017 A4 1 piece cover DIN83403 A1 600x400 7 mm steel/ D36 20 piece hexagon nut M 20 DIN ISO 4034 A4 2 piece screw plug M 20 2 piece mounting handle DIN83402 - NR Surface preparation SA 2.5, 50 µm 15570 Hempadur, Colour: grey 12430</p>

Type AE 1
Manhole cover
600 x 400 DIN 83402 30 kg
DIN 83402 - NR



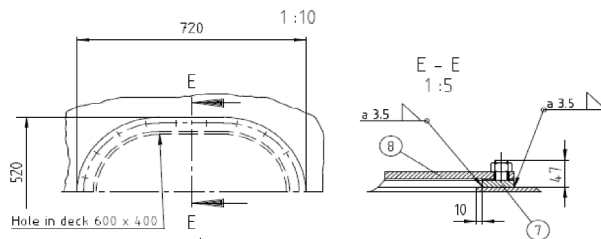
3/6

MEKO A-100 MB
00051631
16750 MANHOLE FRAMES AND COVERS

10.05.2021

Type AE3, DIN 83402 5 pieces per ship	<p><u>Pos.7: Welded parts Mat.-No. 0000400749 / MANHOLE FRAME</u> 1 piece frame DIN83402 12 mm steel/ D36 20 piece DUO-threaded bolt ST/1.4571 with protective caps Surface preparation SA 2.5, 20 µm, Sigmaweld 199, Colour: red brown</p>
	<p><u>Pos.8: Not welded parts Mat.-No. 0000400750 / MANHOLE COVER</u> 1 piece seal DIN83403 A400x600 2 piece hexagon head screw M 20 x 20 DIN ISO 4017 A4 1 piece cover DIN83403 A3 600x400 12 mm steel/ D36 20 piece hexagon nut M 20 DIN ISO 4034 A4 2 piece screw plug M 20 2 piece mounting handle DIN83402 - NR Surface preparation SA 2.5, 50 µm 15570 Hempadur, Colour: grey 12430</p>

Type AE 3
Manhole cover
600 x 400 DIN 83402 42 kg
DIN 83402 - NR



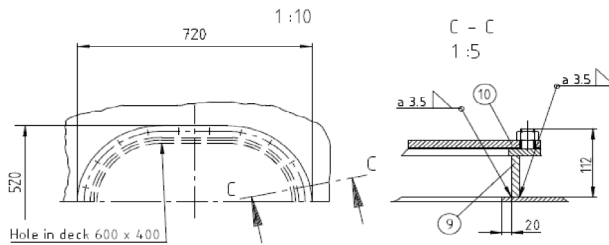
4/6

MEKO A-100 MB
00051631
16750 MANHOLE FRAMES AND COVERS

10.05.2021

Type B1, DIN 83402 4 pieces per ship	<p>Pos.9: Welded parts Mat.-No. 0000382881 / MANHOLE FRAME 1 piece frame DIN83402 12 mm steel/ D36 20 piece DUO-hexagon head screw ST/1.4571 with protective caps Surface preparation SA 2.5, 20 µm, Sigmaweld 199, Colour: red brown</p> <p>Pos.10: Not welded parts Mat.-No. 0000382883 / MANHOLE COVER 1 piece seal DIN83403 A400x600 2 piece hexagon head screw M 20 x 20 DIN ISO 4017 A4 1 piece cover DIN83403 B1 600x400 7 mm steel/ D36 20 piece hexagon nut M 20 DIN ISO 4034 A4 2 piece screw plug M 20 Surface preparation SA 2.5, 50 µm 15570 Hempadur, Colour: grey 12430</p>
---	--

Type B 1
Manhole cover
600 x 400 DIN 83402 37 kg



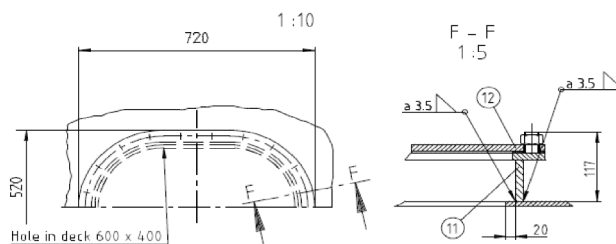
5/6

MEKO A-100 MB
00051631
16750 MANHOLE FRAMES AND COVERS

10.05.2021

Type B3, DIN 83402 38 pieces per ship	<p>Pos.11: Welded parts Mat.-No. 0000400751 / MANHOLE FRAME 1 piece frame DIN83402 12 mm steel/ D36 20 piece DUO-hexagon head screw ST/1.4571 with protective caps Surface preparation SA 2.5, 20 µm, Sigmaweld 199, Colour: red brown</p> <p>Pos.12: Not welded parts Mat.-No. 0000400752 / MANHOLE COVER 1 piece seal DIN83403 A400x600 2 piece hexagon head screw M 20 x 20 DIN ISO 4017 A4 1 piece cover DIN83403 B3 600x400 12 mm steel/ D36 20 piece hexagon nut M 20 DIN ISO 4034 A4 2 piece screw plug M 20 Surface preparation SA 2.5, 50 µm 15570 Hempadur, Colour: grey 12430</p>
--	--

Type B 3
Manhole cover
600 x 400 DIN 83402 49 kg



6/6